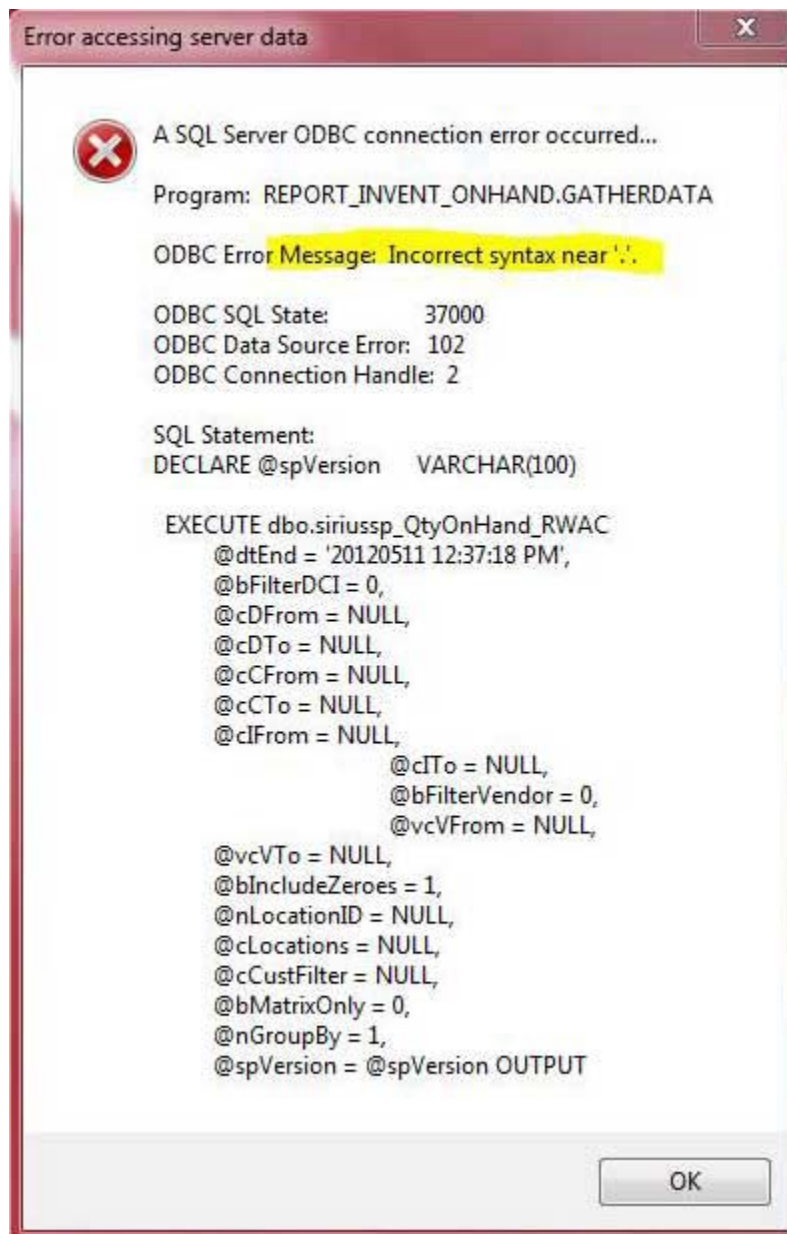


Ensure that your replication server has the same compatibility level as your SiriusSQL database

Issue: When I try to run a report against our replicated server, I get the following error information:



A SQL Server ODBC connection has occurred...

Program: REPORT_INVENT_ONHAND.GATHERDATA

ODBC Error Message: Incorrect syntax near '!'.

ODBC SQL State: 37000

ODBC Data Source Error: 102

ODBC Connection Handle: 2

SQL Statement:

```
DECLARE @spversion VARCHAR(100)
```

Solution: On the replication server ensure that the SQL Server database has the same compatibility level as the SiriusSQL database.